

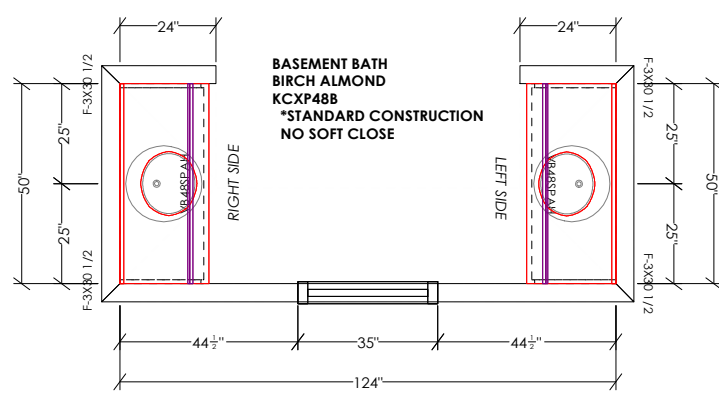
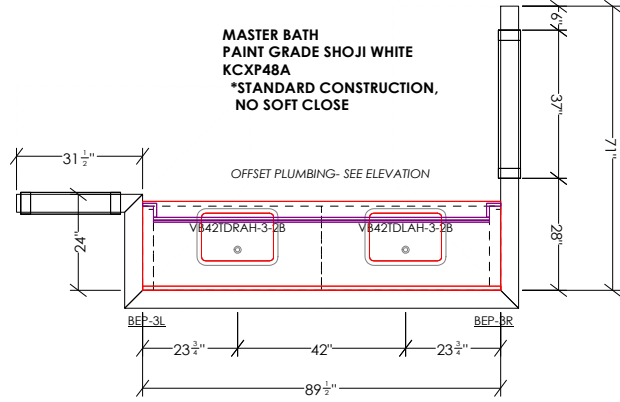
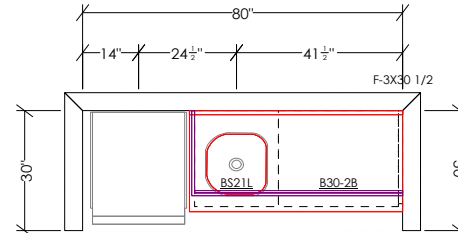
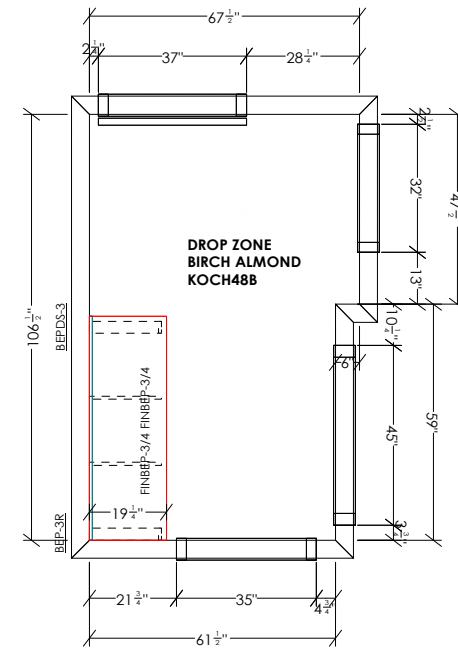
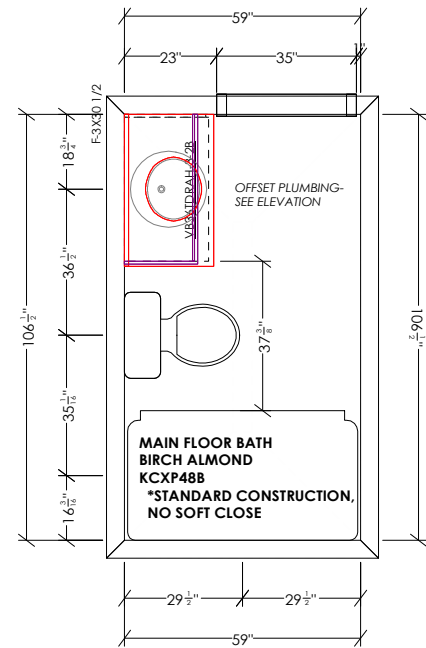
RED LEAF CUSTOM HOMES | CAMDEN PLAN
 7369 29TH ST S, FARGO, ND
 TRACI/TAYLOR

MANUFACTURER: KOCH EXPRESS
 DOOR STYLE: WINDSOR
 OUTSIDE PROFILE: SHAKER
 OVERLAY: STANDARD
 DRAWER FRONT: FLAT/SLAB
 WOOD SPECIES: BIRCH/PT GRADE
 FINISH: ALMOND/SHOJI WHITE
 INTERIOR: NATURAL MAPLE MELAMINE

CABINET BOX CONSTRUCTION: FURNITURE BOARD
 DRAWER BOX CONSTRUCTION: DOVETAIL IN KITCHEN ONLY
 **RABBETED PLYWOOD REST OF HOUSE
 DRAWER GUIDES: UM, 7/8 EXT, SC IN KITCHEN ONLY
 **SIDE MOUNT GLIDES REST OF HOUSE
 DOOR HINGES: SOFT CLOSE IN KITCHEN ONLY

CROWN MOLDING: ANGLED SHAKER
 LIGHTRAIL MOLDING: NONE
 BASE MOLDING: TOE KICK + SQUARE SHOE

KITCHEN
 BIRCH ALMOND ISLAND
 KCXP4
 PT GRADE SHOJI WHITE PERIMETER
 KCXP48C

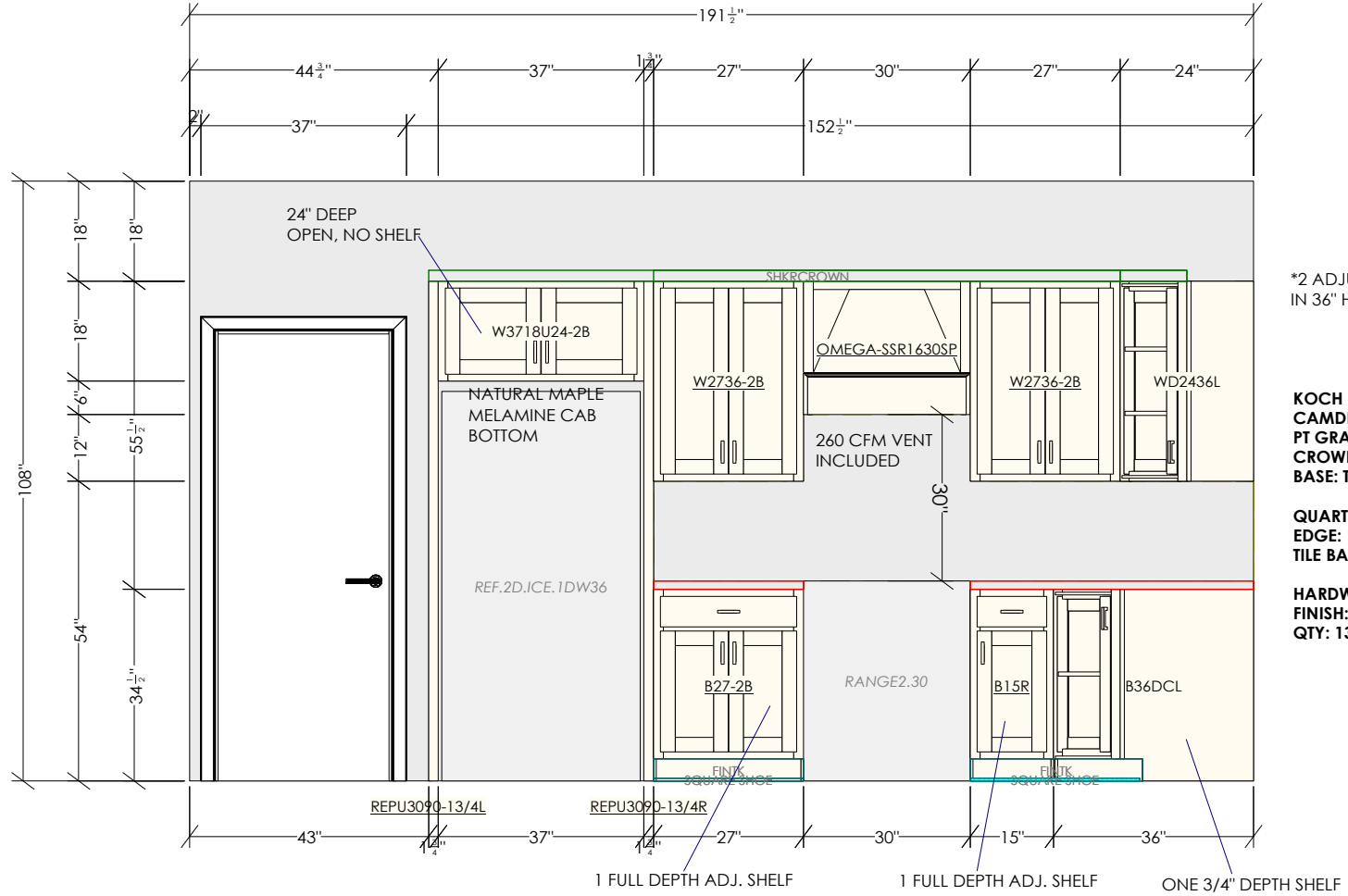


Dimensions and size are subject to verify on the job site and adjustment to fit job conditions. This is an original design and must not be released or copied unless applicable fee has been paid or job order placed.



DESIGN STUDIO 360
 FLOOR TO CEILING
 360 36TH STREET SOUTH
 FARGO, ND 58103
 P.701.237.6601
 DESIGNED BY: TAYLOR

Designed: 9/16/2024
 Printed: 9/18/2024



*2 ADJUSTBLE SHELVES
IN 36" HIGH UPPERS

**KOCH EXPRESS
CAMDEN DOOR
PT GRADE SHOJI WHITE
CROWN: ANGLED SHAKER
BASE: TOEKICK + SQUARE SHOE**

**QUARTZ: CARRARA MIKSA
EDGE: 1/4" ROUND
TILE BACKSLASH**

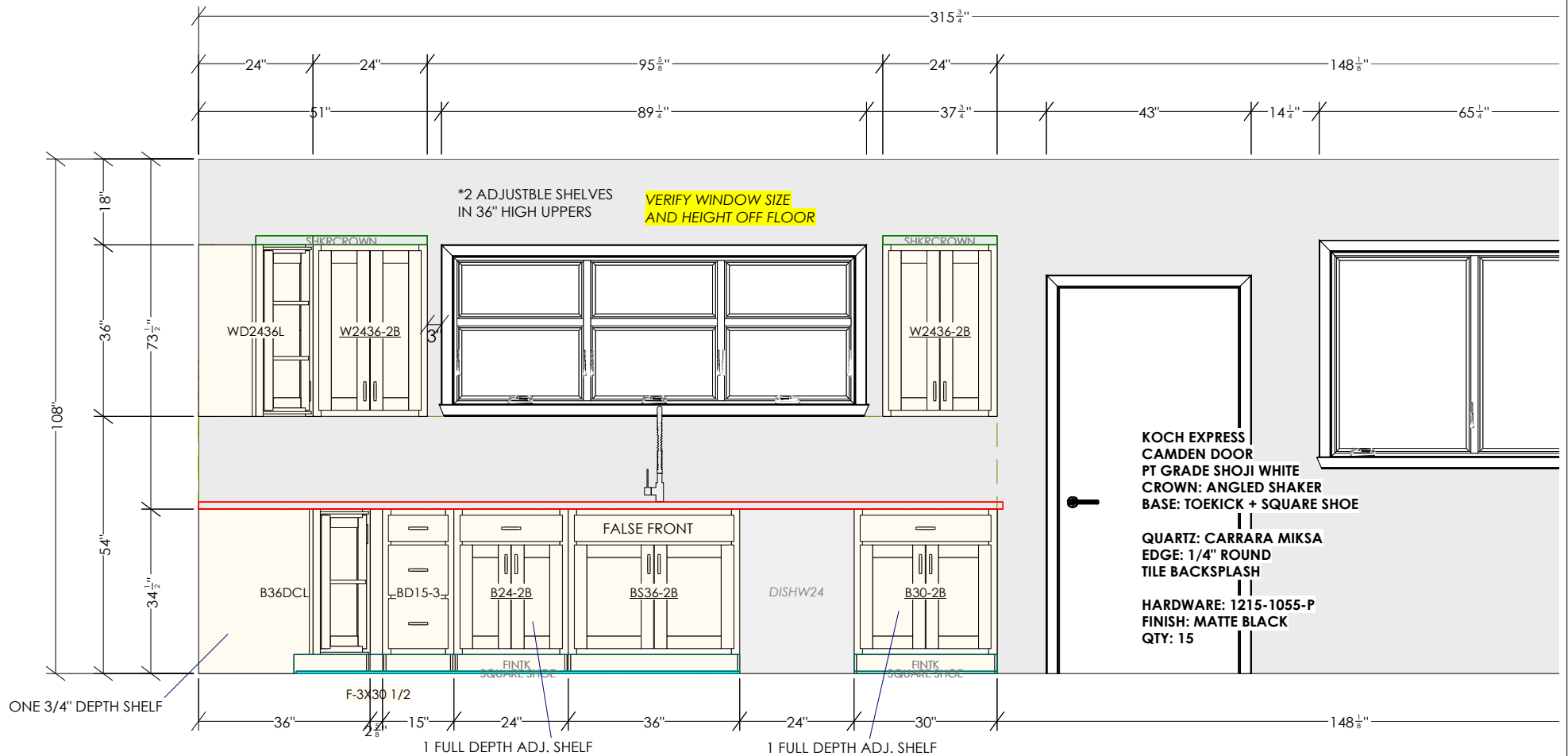
**HARDWARE: 1215-1055-P
FINISH: MATTE BLACK
QTY: 13**

Dimensions and size are subject to verify on the job site and adjustment to fit job conditions. This is an original design and must not be released or copied unless applicable fee has been paid or job order placed.



DESIGN STUDIO 360
FLOOR TO CEILING
360 36TH STREET SOUTH
FARGO, ND 58103
P.701.237.6601
DESIGNED BY: TAYLOR

Designed: 9/16/2024
Printed: 9/18/2024



Dimensions and size are subject to verify on the job site and adjustment to fit job conditions. This is an original design and must not be released or copied unless applicable fee has been paid or job order placed.

DESIGN



STUDIO

DESIGN STUDIO 360
FLOOR TO CEILING
360 36TH STREET SOUTH
FARGO, ND 58103
P.701.237.6601
DESIGNED BY: TAYLOR

Designed: 9/16/2024
Printed: 9/18/2024

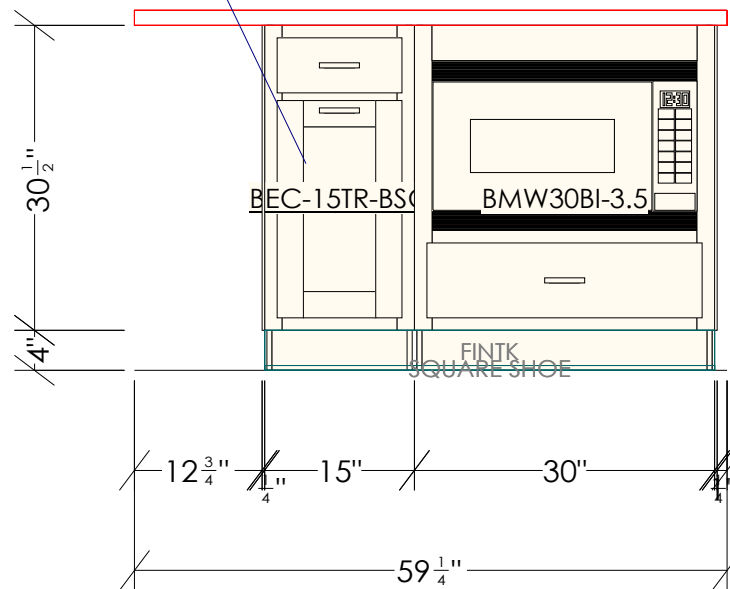
V3_7369 29TH ST S_CAMDEN

SINK WALL

Drawing #: 1

Scale : 0 3/8" 1'

SINGLE TRASH PULLOUT
WITH ONE STEEL BIN,
SOFT CLOSE



**KOCH EXPRESS
CAMDEN DOOR
BIRCH ALMOND
BASE: TOEKICK + SQUARE SHOE**

**QUARTZ: CARRARA MIKSA
EDGE: 1/4" ROUND**

**HARDWARE: 1215-1055-P
FINISH: MATTE BLACK
QTY: 3**

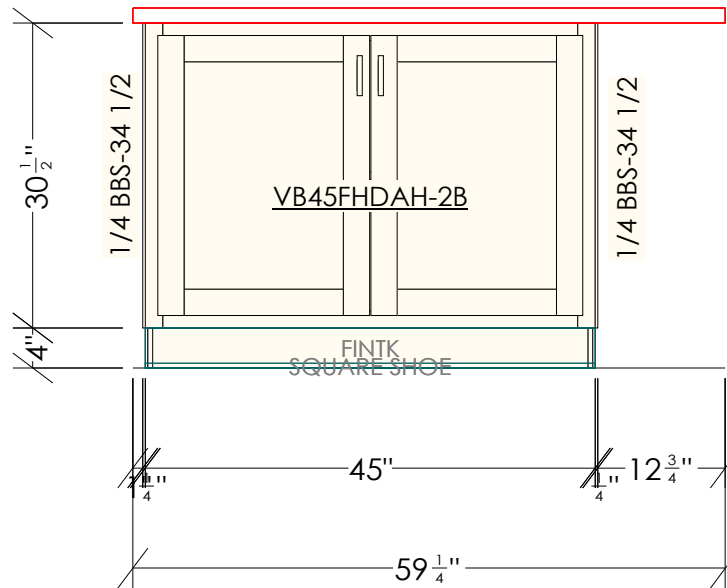
Dimensions and size are subject to verify on the job site and adjustment to fit job conditions. This is an original design and must not be released or copied unless applicable fee has been paid or job order placed.



DESIGN STUDIO 360
FLOOR TO CEILING
360 36TH STREET SOUTH
FARGO, ND 58103
P.701.237.6601
DESIGNED BY: TAYLOR

Designed: 9/16/2024
Printed: 9/18/2024

18" DEEP
1 ADJ. FDS EACH



**KOCH EXPRESS
CAMDEN DOOR
BIRCH ALMOND
BASE: TOEKICK + SQUARE SHOE**

**QUARTZ: CARRARA MIKSA
EDGE: 1/4" ROUND**

**HARDWARE: 1215-1055-P
FINISH: MATTE BLACK
QTY: 2**

Dimensions and size are subject to verify on the job site and adjustment to fit job conditions. This is an original design and must not be released or copied unless applicable fee has been paid or job order placed.

DESIGN



STUDIO

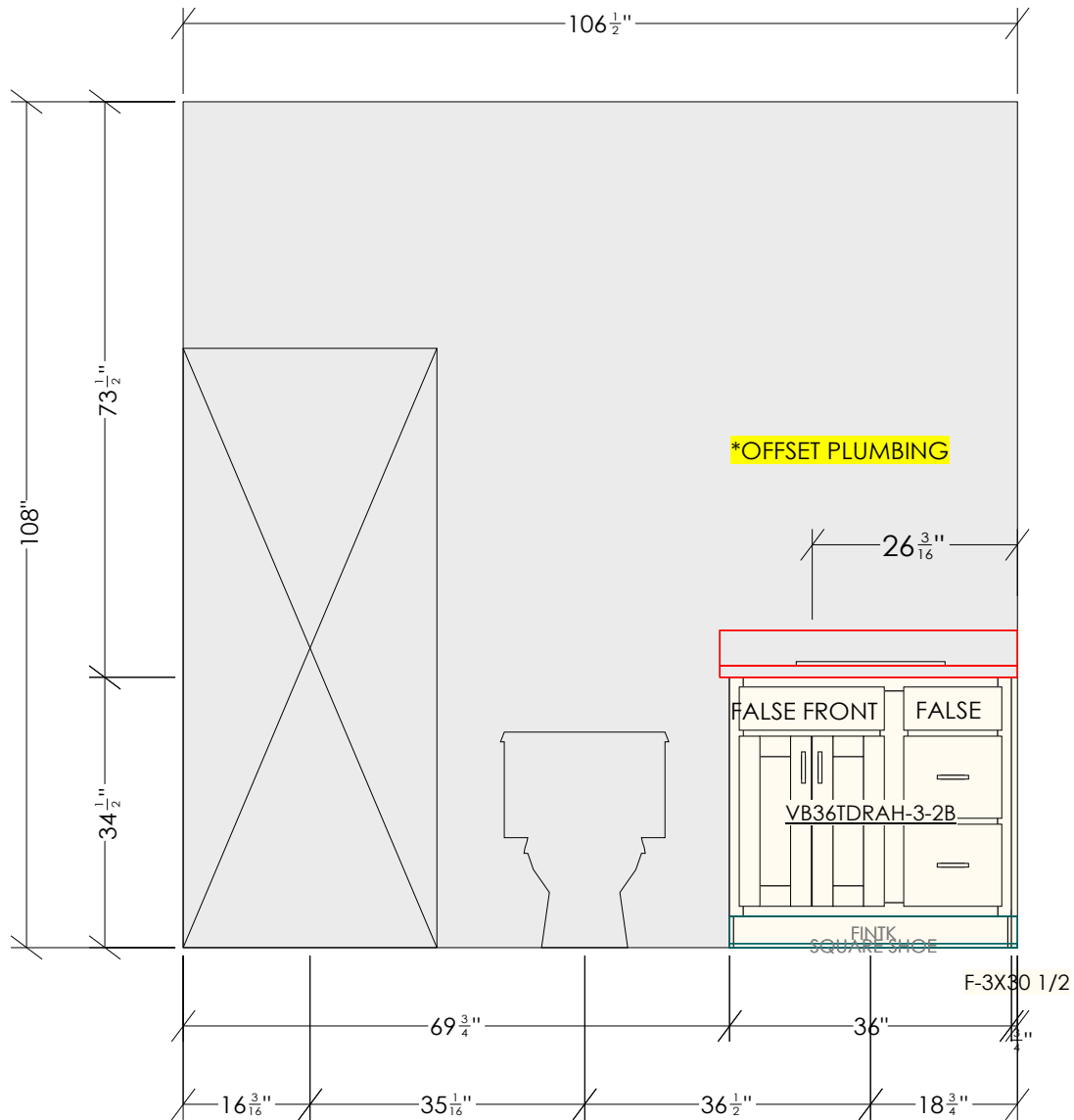
DESIGN STUDIO 360
FLOOR TO CEILING
360 36TH STREET SOUTH
FARGO, ND 58103
P.701.237.6601
DESIGNED BY: TAYLOR

Designed: 9/16/2024
Printed: 9/18/2024

V3_7369 29TH ST S_CAMDEN

ISLAND BACK Drawing #: 1

Scale : 0 5/8" 1'



**KOCH EXPRESS
CAMDEN DOOR
BIRCH ALMOND
BASE: TOEKICK + SQUARE SHOE**

**LAMINATE: ANZIO MARBLE 5037-38
EDGE: WATERFALL
STANDARD BACKSPASH**

**HARDWARE: 1215-1055-P
FINISH: MATTE BLACK
QTY: 4**

Dimensions and size are subject to verify on the job site and adjustment to fit job conditions. This is an original design and must not be released or copied unless applicable fee has been paid or job order placed.

DESIGN



STUDIO

DESIGN STUDIO 360
FLOOR TO CEILING
360 36TH STREET SOUTH
FARGO, ND 58103
P.701.237.6601
DESIGNED BY: TAYLOR

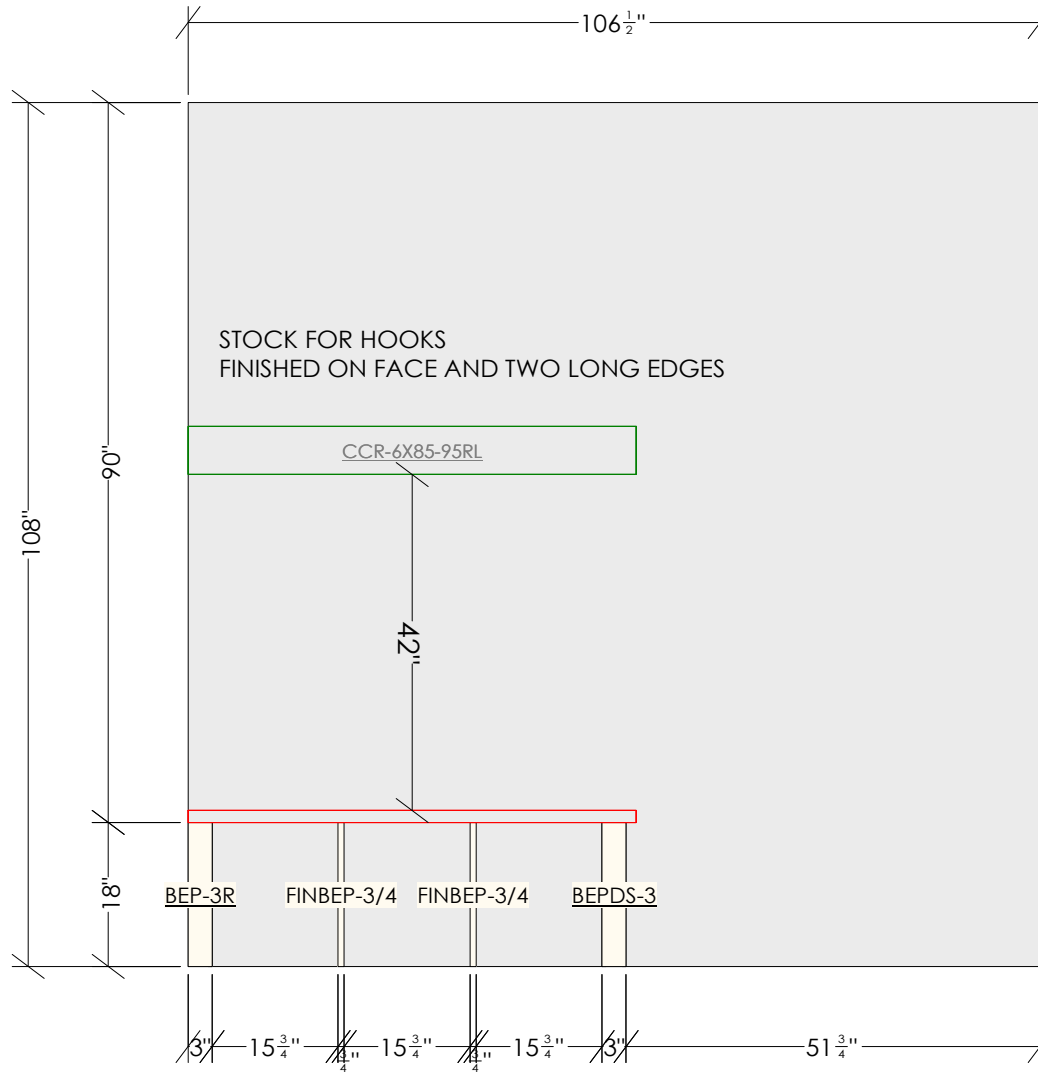
Designed: 9/16/2024
Printed: 9/18/2024

V3_7369 29TH ST S_CAMDEN

MAIN FLOOR BATH

Drawing #: 1

Scale : 0 1/2" 1'



**KOCH CLASSIC
BIRCH ALMOND**

**LAMINATE: LISOLA 5043K-15
EDGE: WATERFALL**

**HOOKS:
FINISH:
QTY:**

Dimensions and size are subject to verify on the job site and adjustment to fit job conditions. This is an original design and must not be released or copied unless applicable fee has been paid or job order placed.

DESIGN



STUDIO

DESIGN STUDIO 360
FLOOR TO CEILING
360 36TH STREET SOUTH
FARGO, ND 58103
P.701.237.6601
DESIGNED BY: TAYLOR

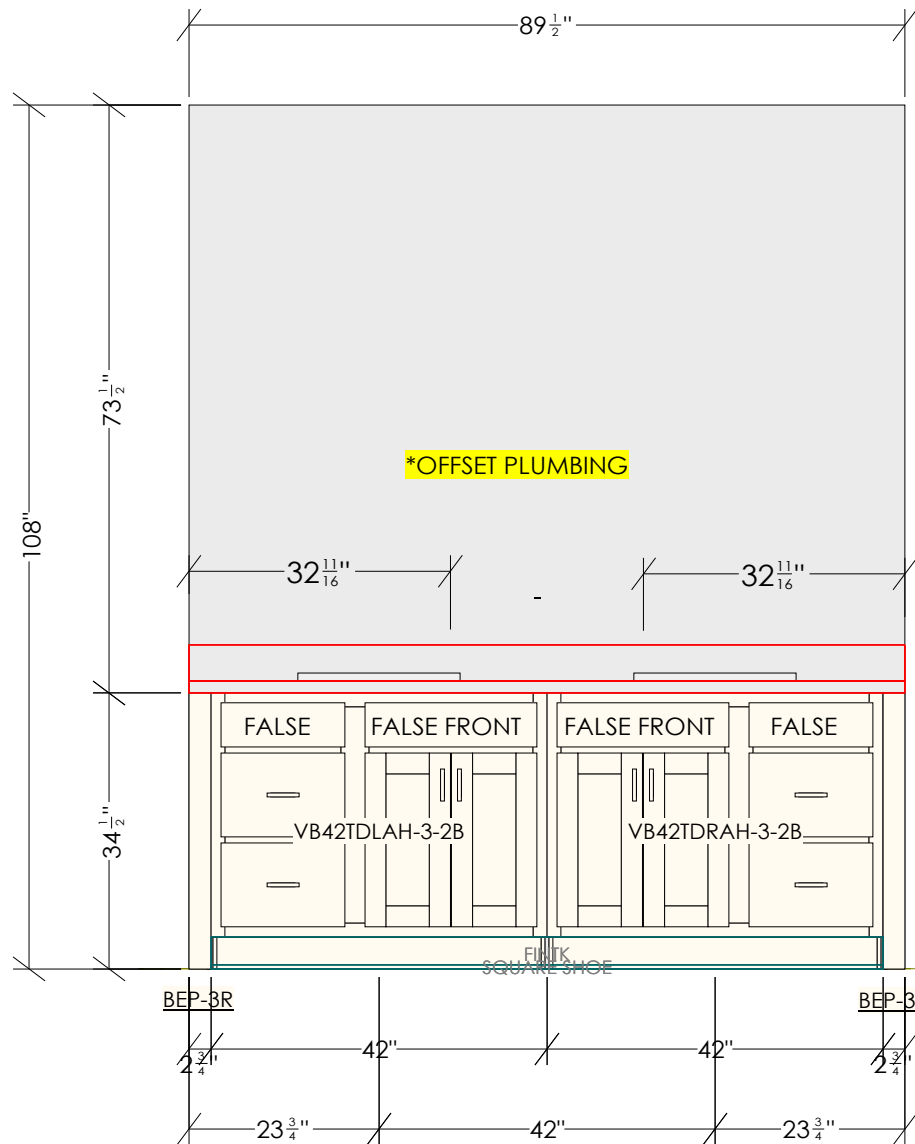
Designed: 9/16/2024
Printed: 9/18/2024

V3_7369 29TH ST S_CAMDEN

DROP ZONE

Drawing #: 1

Scale : 0 1/2" 1'



KOCH EXPRESS
CAMDEN DOOR
PT GRADE SHOJI WHITE
BASE: TOEKICK + SQUARE SHOE

QUARTZ: CARRARA MIKSA
EDGE: 1/4" ROUND
STANDARD BACKSPLASH

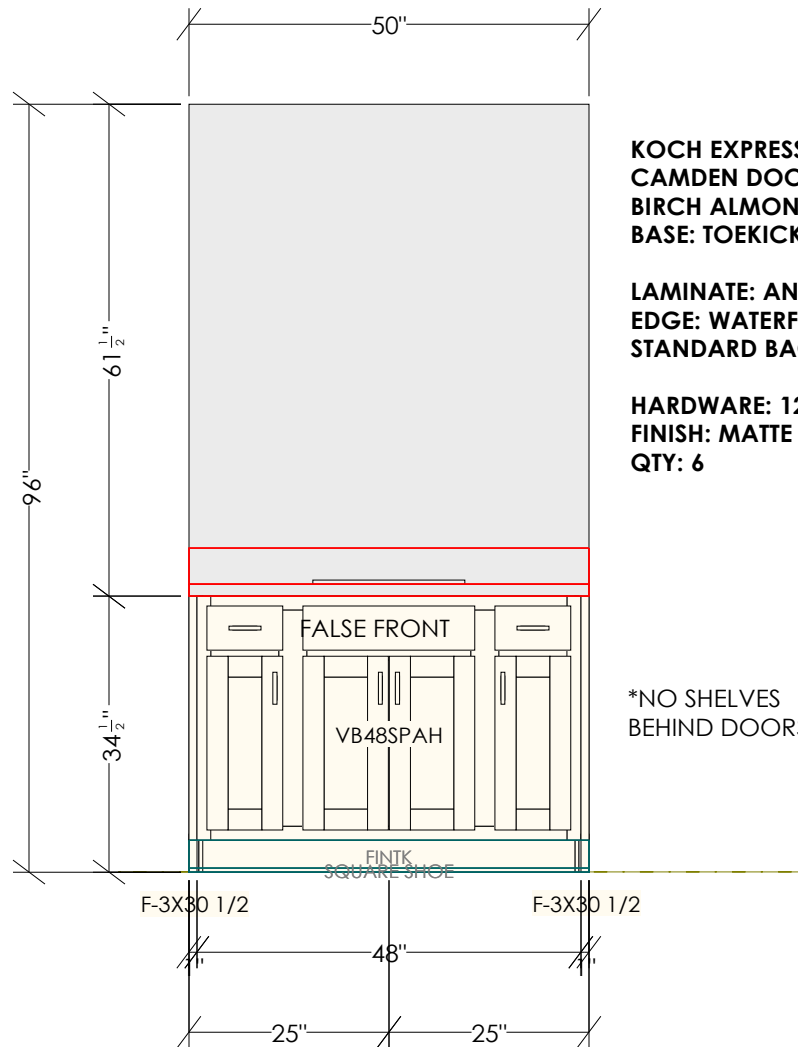
HARDWARE: 1215-1055-P
FINISH: MATTE BLACK
QTY: 8

Dimensions and size are subject to verify on the job site and adjustment to fit job conditions. This is an original design and must not be released or copied unless applicable fee has been paid or job order placed.



DESIGN STUDIO 360
FLOOR TO CEILING
360 36TH STREET SOUTH
FARGO, ND 58103
P.701.237.6601
DESIGNED BY: TAYLOR

Designed: 9/16/2024
 Printed: 9/18/2024



**KOCH EXPRESS
CAMDEN DOOR
BIRCH ALMOND
BASE: TOEKICK + SQUARE SHOE**

**LAMINATE: ANZIO MARBLE 5037-38
EDGE: WATERFALL
STANDARD BACKSPLASH**

**HARDWARE: 1215-1055-P
FINISH: MATTE BLACK
QTY: 6**

*NO SHELVES
BEHIND DOORS

Dimensions and size are subject to verify on the job site and adjustment to fit job conditions. This is an original design and must not be released or copied unless applicable fee has been paid or job order placed.

DESIGN



STUDIO

DESIGN STUDIO 360
FLOOR TO CEILING
360 36TH STREET SOUTH
FARGO, ND 58103
P.701.237.6601
DESIGNED BY: TAYLOR

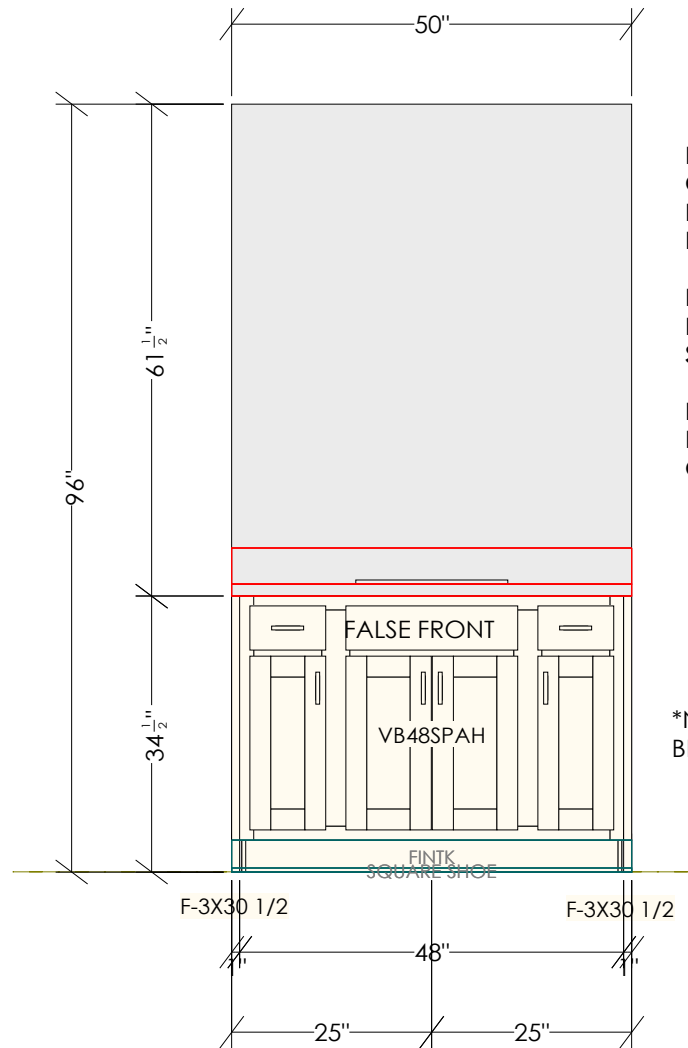
Designed: 9/16/2024
Printed: 9/18/2024

V3_7369 29TH ST S_CAMDEN

BSMNT BATH RIGHT

Drawing #: 1

Scale : 0 1/2" 1'



**KOCH EXPRESS
CAMDEN DOOR
BIRCH ALMOND
BASE: TOEKICK + SQUARE SHOE**

**LAMINATE: ANZIO MARBLE 5037-38
EDGE: WATERFALL
STANDARD BACKSPASH**

**HARDWARE: 1215-1055-P
FINISH: MATTE BLACK
QTY: 6**

*NO SHELVES
BEHIND DOORS

Dimensions and size are subject to verify on the job site and adjustment to fit job conditions. This is an original design and must not be released or copied unless applicable fee has been paid or job order placed.

DESIGN



STUDIO

DESIGN STUDIO 360
FLOOR TO CEILING
360 36TH STREET SOUTH
FARGO, ND 58103
P.701.237.6601
DESIGNED BY: TAYLOR

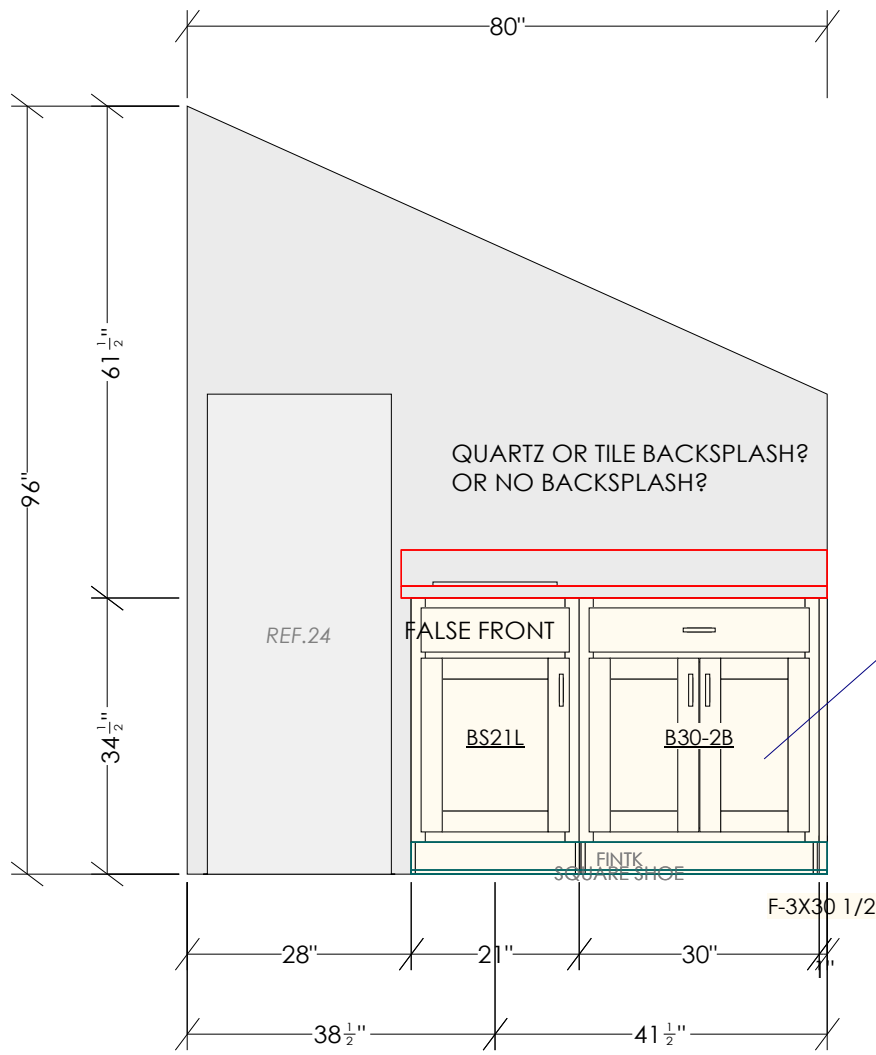
Designed: 9/16/2024
Printed: 9/18/2024

V3_7369 29TH ST S_CAMDEN

BSMNT BATH LEFT

Drawing #: 1

Scale : 0 1/2" 1'



**KOCH EXPRESS
CAMDEN DOOR
BIRCH ALMOND
BASE: TOEKICK + SQUARE SHOE**

**LAMINATE: ANZIO MARBLE 5037-38
EDGE: WATERFALL
STANDARD BACKSPLASH**

**HARDWARE: 1215-1055-P
FINISH: MATTE BLACK
QTY: 4**

QUARTZ OR TILE BACKSPLASH?
OR NO BACKSPLASH?

REF.24

FALSE FRONT

BS21L

B30-2B

1 FULL DEPTH
ADJ. SHELF

FINIK
SQUARE SHOE

F-3X30 1/2

Dimensions and size are subject to verify on the job site and adjustment to fit job conditions. This is an original design and must not be released or copied unless applicable fee has been paid or job order placed.



DESIGN STUDIO 360
FLOOR TO CEILING
360 36TH STREET SOUTH
FARGO, ND 58103
P.701.237.6601
DESIGNED BY: TAYLOR

Designed: 9/16/2024
Printed: 9/18/2024

V3_7369 29TH ST S_CAMDEN

STAIR NOOK

Drawing #: 1

Scale : 0 1/2" 1'